

Background to Darwinian Evolution (Animal Kinds)

Joshua Gurtler, March 27, 2010



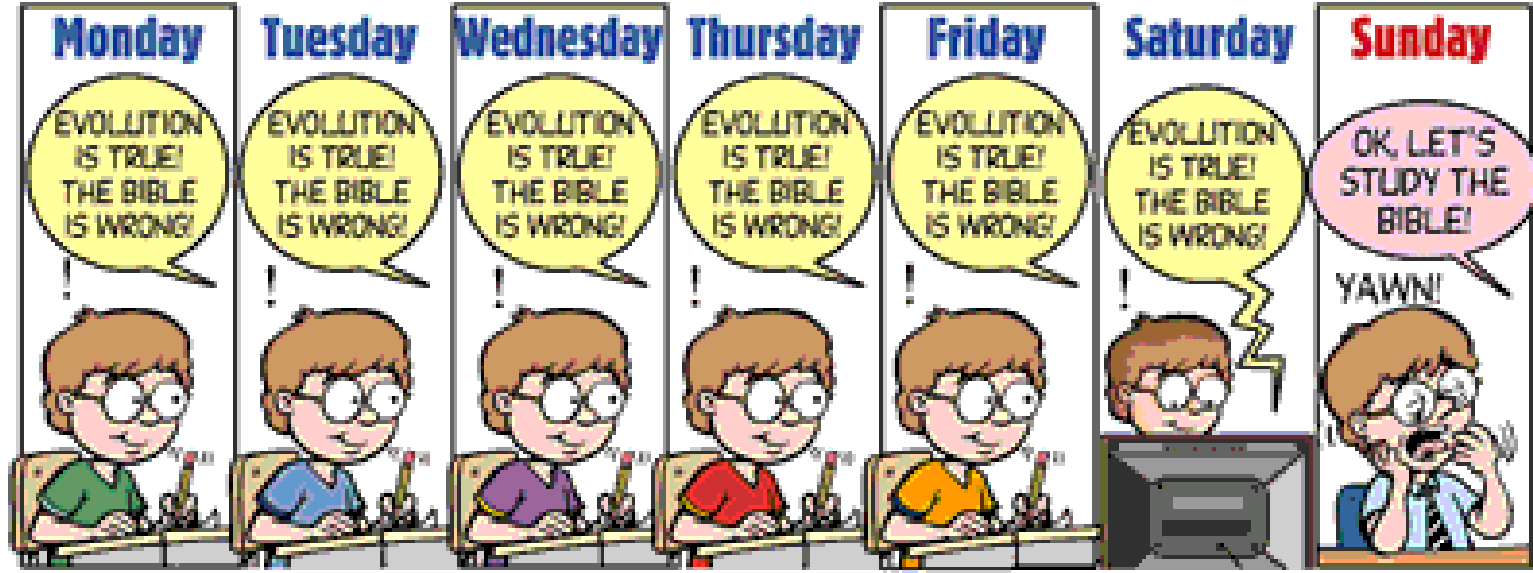
Credit: Apologetics Press

Joshua Gurtler, March 27, 2010

What We Will Learn about Animal Kinds in This Lesson

- A) Fixity of Animal Kinds Precludes Darwinian Evolution**
- B) Animals Can Vary/Change Within Their Kind (Microevolution), But Not Outside Their Kind (Macroevolution).**
- C) Similarities in Created Kinds Reflects an Intelligent Designer**

CREATIONWISE Dan Lietha



The week by week weakening of "Christian" kids across the country.

LET THERE BE TRUTH



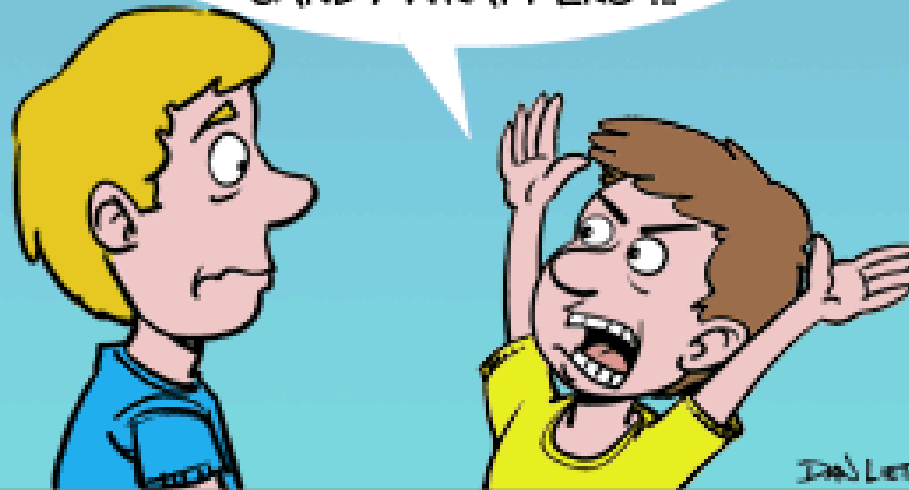
AFTER EDEN

by Dan Lietha

230

WHAT DO YOU MEAN EVOLUTION
ISN'T REAL? I SEE IT EVERYWHERE—
IN TV COMMERCIALS, VIDEO GAMES,
COMIC BOOKS, ANIMATED CARTOONS, MOVIES,
MUSIC VIDEOS, CEREAL BOXES, TV SIT COMS,
MAGAZINE ADS, BUMPER STICKERS,
T-SHIRTS, RESTAURANT TRAY LINERS,
ROLLER COASTERS,
CANDY WRAPPERS ...

www.AnswersInGenesis.org



©AiG 2009

Dan Lietha

Evolution evangelists

What Is Creation Science?

"We have no basis on the record to conclude that creation science need be anything other than a collection of scientific data supporting the theory that life abruptly appeared on the earth."

- **Justices Antonin Scalia and William Rehnquist, *Edwards vs. Aguillard, Dissent (1987)*.**

CREATIONWISE

I USED TO
THINK THAT THE
UNIVERSE JUST HAPPENED
ALL BY ITSELF.



BUT THE MORE I LOOKED AT
EVERYTHING AROUND US,
I REALIZED THERE MUST BE AN
INTELLIGENCE BEHIND IT ALL.



I TOLD THIS TO A FRIEND
OF MINE, AND SHE THOUGHT
I WAS BECOMING A
BIBLICAL CREATIONIST.



I SAID, "NO! I BELIEVE IN
"INTELLIGENT DESIGN,"
THIS WAY I CAN BELIEVE IN
A CREATOR WITHOUT HAVING
TO BELIEVE THE BIBLE!



© AUG 2004

CREATIONWISE



CREATIONWISE

Don Latta



CREATIONWISE

Dan Lietha and Mark Engblom



CREATIONWISE

How important is it for Christians to believe in ABSOLUTE Biblical truth?



Is the real reason you don't believe in evolution...



... based mostly on what man "knows"?



...or on what God knows?

Only one of these will NEVER fail!

CREATIONWISE

False ideas about God's Word are on the increase not only in the world, but in the church as well. How could this happen?



Christians should be like the Bereans and search the Scriptures daily to see if these things are so.

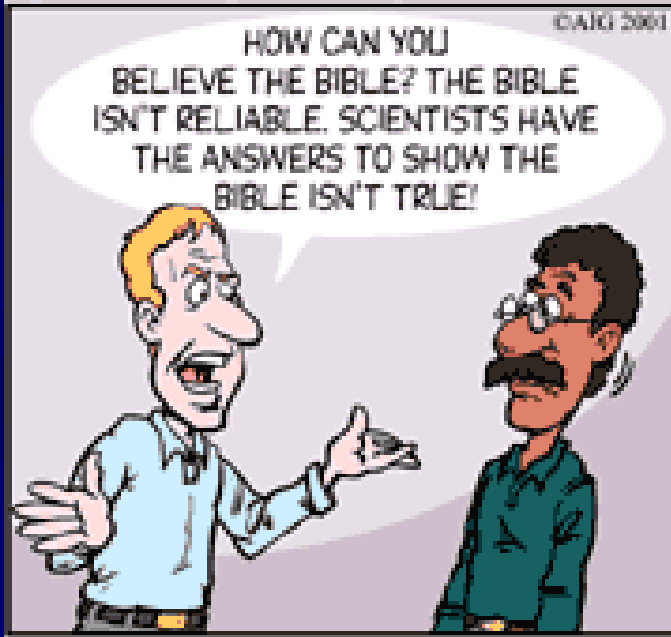
Acts 17:11



Instead, too many Christians just sit there and doubt the Scriptures because some guy on TV said so.



CREATIONWISE



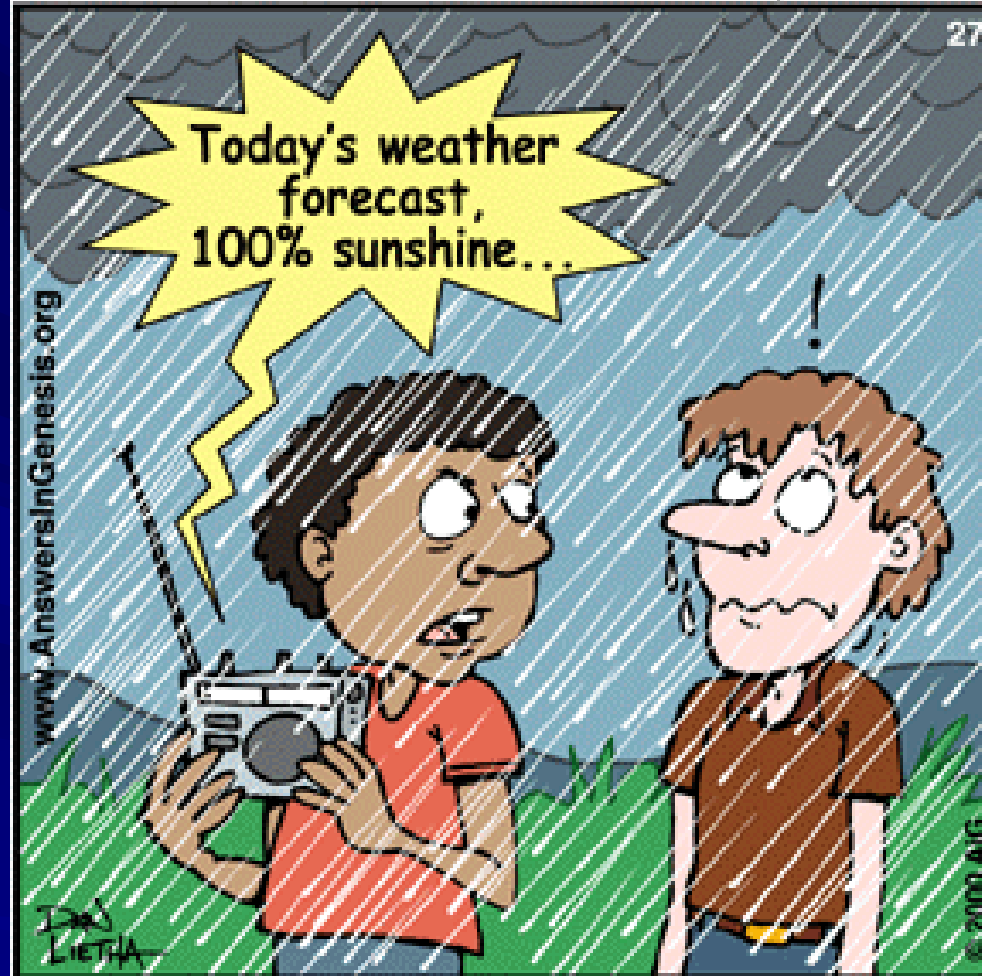
CREATIONWISE



AFTER EDEN

by Dan Lietha

27



Tell me again why I should trust scientists' ability to be accurate about life on Earth "millions of years" ago...

Slandering Creationists I

“When are you going to accept science and quit trying to create a new dark age for humanity?”

Credit: Jason Lisle, *Ultimate Proof of Creation*. 2009. New Leaf Publishing Group: Green Forest, AR.

Slandering Creationists II

“Your position is so stiff. If everyone were like you we would still be without cars, mathematics, chemistry, geology, archaeology and any other science. I hope some day you can rethink your position and humanity can walk together toward progress, prosperity and knowledge.”

Credit: Jason Lisle, *Ultimate Proof of Creation*. 2009. New Leaf Publishing Group: Green Forest, AR.

Slandering Creationists III

“Your denial of basic science will, in the long run, discredit you and your cause. The empirical evidence is available for all to consider. Your message is akin to asking us to believe that the world is flat or that the sun revolves around the earth, despite overwhelming empirical evidence to the contrary. How can you honestly deny science and be so ignorant to the obvious truth about our beginnings? . . . stop leading people in nonsense and lies. If anyone has half a brain they’re going to listen to science for truth and not 4,000 year old stories written by goat herders.”

Credit: Jason Lisle, *Ultimate Proof of Creation*. 2009. New Leaf Publishing Group: Green Forest, AR.

Slandering Creationists IV

“If perchance there is a God and reason behind this madness they certainly will not be found in a book as flawed and disgusting as the Bible. The claim that T-Rex was a vegetarian prior to the fall is so absurd it scarcely deserves commentary.”

Credit: Jason Lisle, *Ultimate Proof of Creation*. 2009. New Leaf Publishing Group: Green Forest, AR.

Comment: I remain open to the possibility of pre-flood vegetarianism of animal-kind. Beyond the possibility of supernatural intervention, there are vegetarian animals today who, by all appearances, would be assumed to be carnivorous: (e.g. panda bear, fruit bat, case of the lion that wouldn't eat meat, dogs on corn/soy diets, etc.)

What is Evolution?

(AKA, Naturalistic Evolution, Neo-Darwinism, Darwinism, or The General Theory of Evolution)

The philosophy that all life on earth gradually evolved from a single-celled organism by means of random mutations and natural selection (i.e., survival of the fittest). AKA, “particles to people” or “molecules to man.”

I. The History of Darwinian Evolution

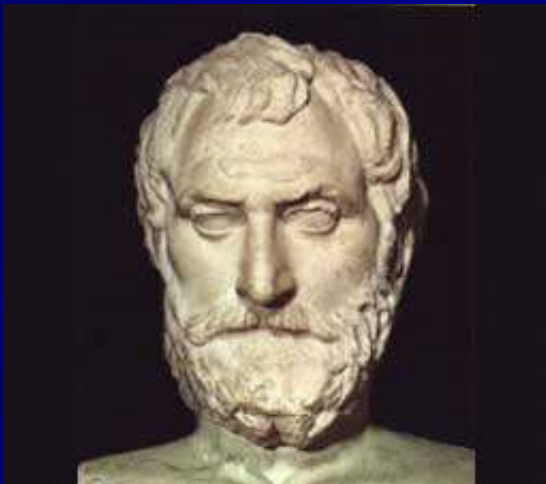
Men have been trying to explain God away for over 3,000 years

1) **Psalms 14:1; 53:1**

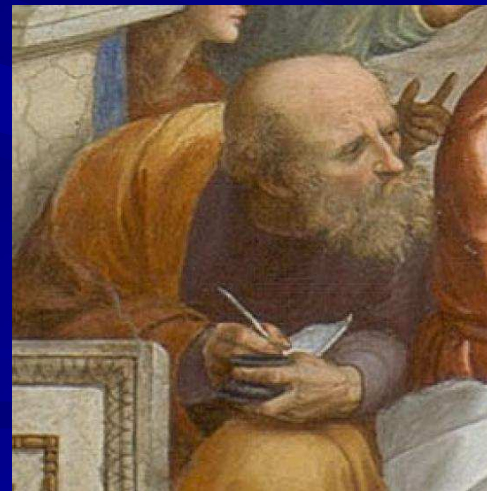
2) **Ancient Greeks: Thales (588 B.C.)**

Anaximander (570 B.C.); Empedocles (455

B.C.); Democritus (420 B.C.); Strato (288 B.C.)



Thales, 588 B.C.



Anaximander, 570 B.C.

Evolution Proposed Prior to Charles Darwin



Jean-Baptiste Lamarck (1744-1829)



Geoffroy Saint-Hilaire (1772-1844)



Robert Grant (1793-1874)



Alfred Russel Wallace (1823-1913)



Erasmus Darwin (1731-1802)

ON
THE ORIGIN OF SPECIES

BY MEANS OF NATURAL SELECTION,

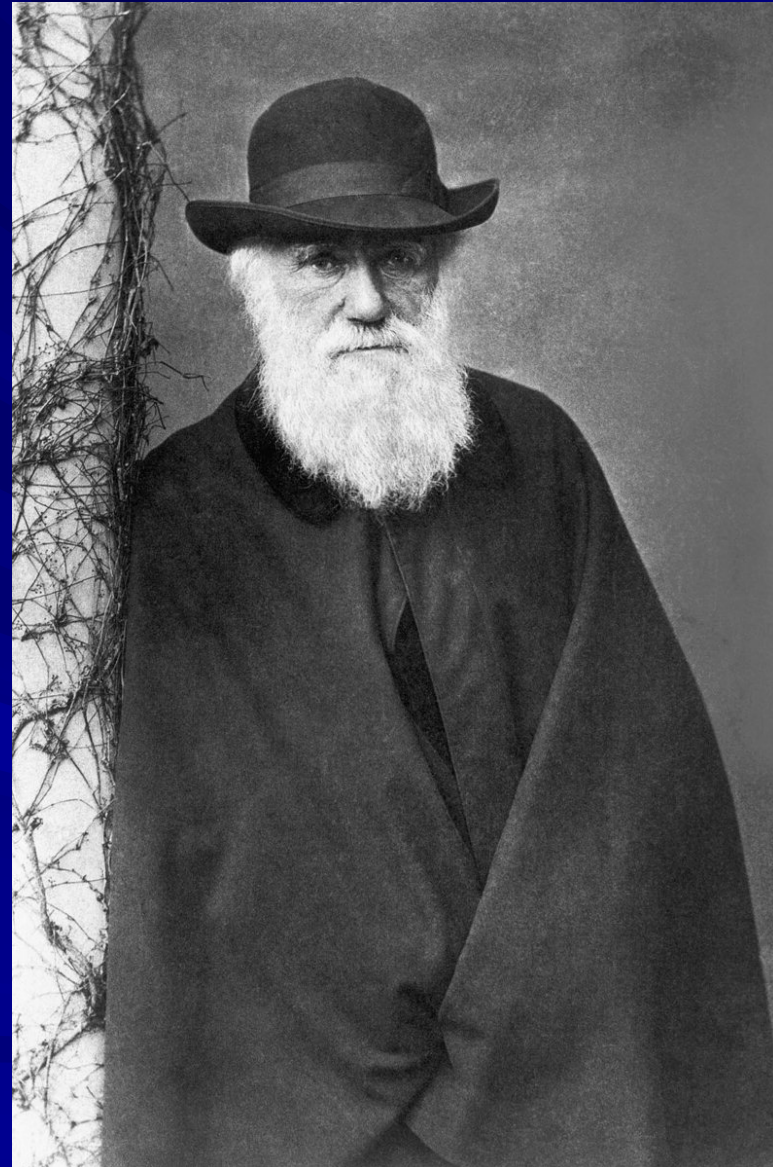
OR THE
PRESERVATION OF FAVOURED RACES IN THE STRUGGLE
FOR LIFE.

By CHARLES DARWIN, M.A.,

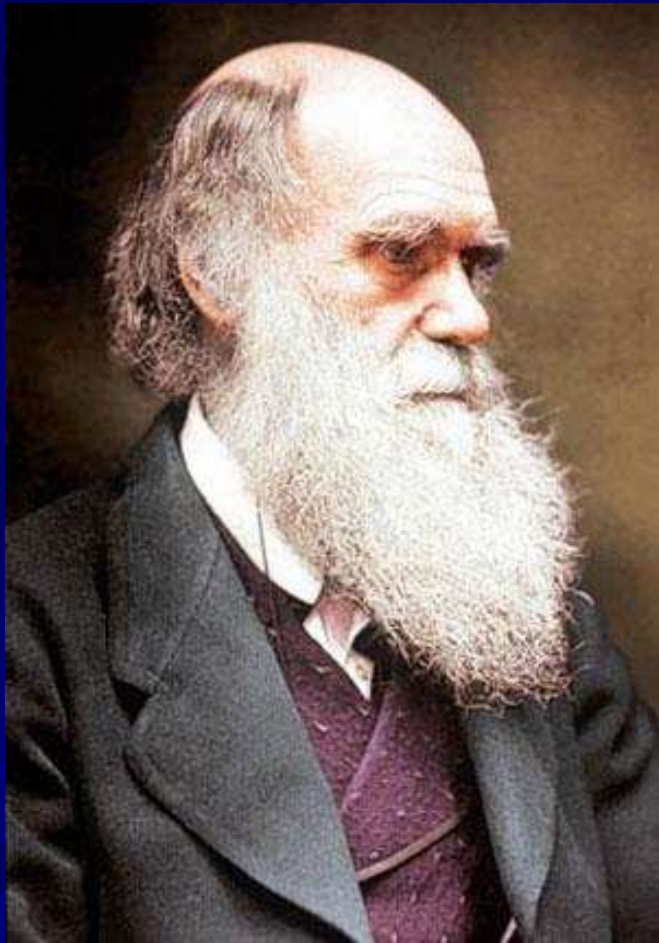
FELLOW OF THE ROYAL, GEOLOGICAL, LINNEAN, ETC., SOCIETIES;
AUTHOR OF 'JOURNAL OF RESEARCHES DURING H. M. S. BEAGLE'S VOYAGE
ROUND THE WORLD.'

LONDON:
JOHN MURRAY, ALBEMARLE STREET.
1859.

The right of Translation is reserved.



Darwin Admitted His Weakness



“Why is not every geological formation and every stratum full of such intermediate links? Geology assuredly does not reveal any such finely-graduated organic chain; and this, perhaps, is the most obvious and serious objection which can be urged against the theory”

- The Origin of Species, 1872
edition, pp. 264, 265

“What the ‘record’ shows is nearly a century of fudging and finagling by scientists attempting to force various fossil morsels and fragments to conform with Darwin’s notions, all to no avail. Today the millions of fossils stand as very visible, ever-present reminders of the paltriness of the arguments and the overall shabbiness of the theory that marches under the banner of evolution.”

- Jeremy Rifkin, Algeny, p. 125; (New York: Viking Press, 1983) [Evolutionist, advisor to France, Germany, Portugal, Slovenia, 17 best-selling books on economics and the environment. *The National Journal* named Rifkin as one of 150 people in the U.S. most influence in shaping federal government policy.]



II. Principle #1

a. Change (microevolution) occurs within animal kinds (i.e., groups or types, within phylogenetic boundaries, aka variation within a kind)

b. Microevolution does not cross phylogenetic boundaries into macroevolution (i.e., animals do not change outside their kind)

Gen. 1:21, 24, 25

*“So God created great sea creatures and every living thing that moves, with which the waters abounded, according to their **kind**, and every winged bird according to its **kind**. And God saw that it was good.”*

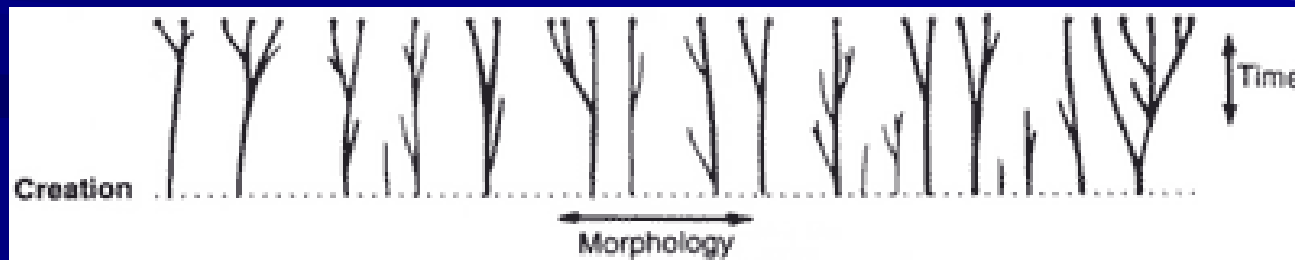
*“Then God said, “Let the earth bring forth the living creature according to its **kind**: cattle and creeping thing and beast of the earth, each according to its **kind**; and it was so. And God made the beast of the earth according to its **kind**, cattle according to its **kind**, and everything that creeps on the earth according to its **kind**. And God saw that it was good.”*

Note: “Min” is the Hebrew word for “kind.”

What Is Baraminology?

“Baraminology is a creationist taxonomic system that classifies animals into groups called "created kinds" or "baramins" according to the account of creation in the book of Genesis. It claims that kinds cannot interbreed, and have no evolutionary relationship to one another.”

- First Proposed by Frank Marsh in 1941.



> 1,300 Varieties of Roses



Canidae *Canis*

Sdsnake.com

animals.nationalgeographic.com

daveparsons.com



Coyote



Wolf



Jackal

Canidae *Canis*

Sciencetrio.wordpress.com



Coywolf

Canidae *Canis lupus rufus*



Red Wolf

[Wikipedia.com](https://en.wikipedia.org/wiki/Canis_lupus_rufus)

Canidae *Canis*

Sdsnake.com

animals.nationalgeographic.com

daveparsons.com



Coyote

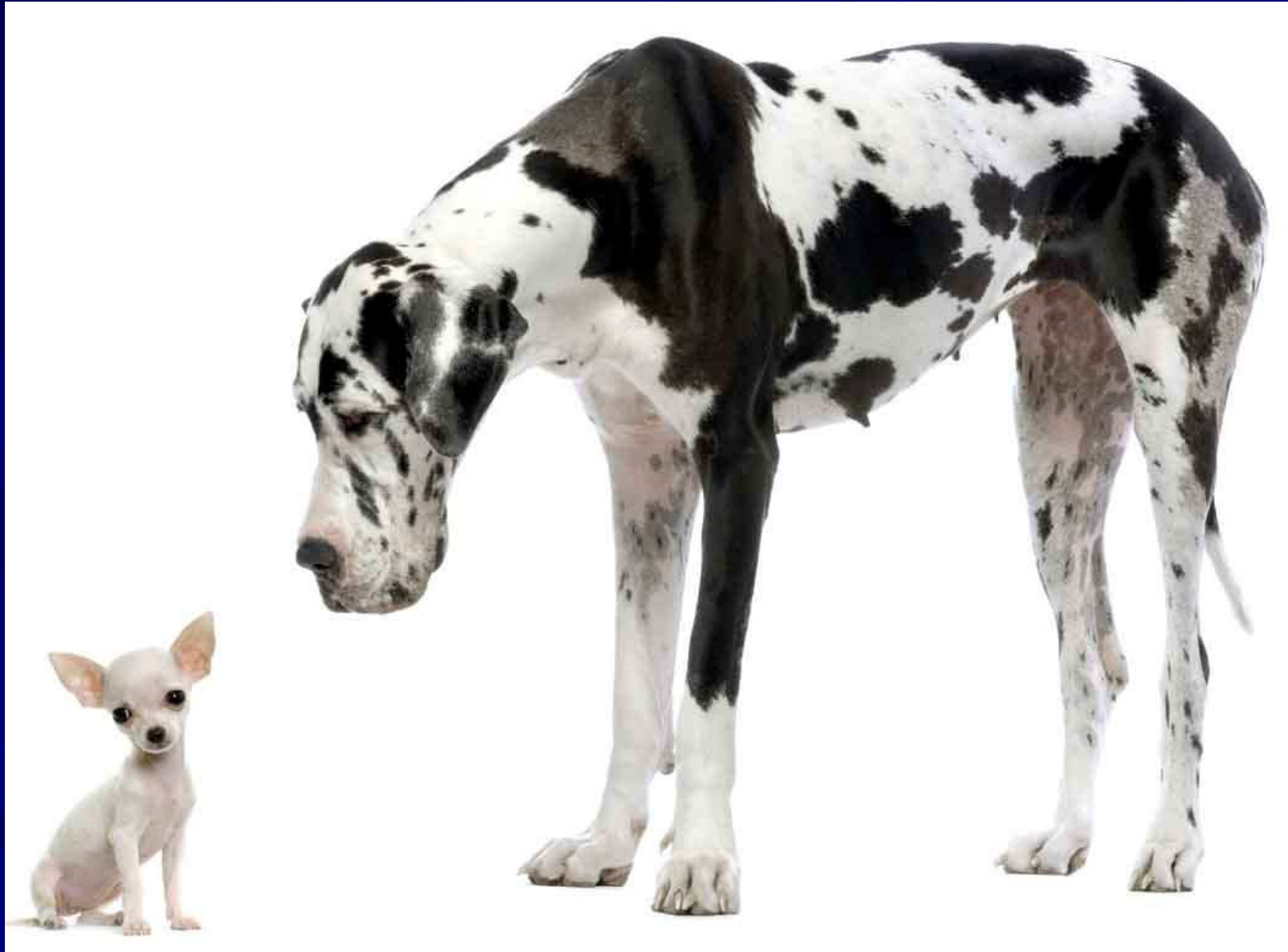


Wolf



Jackal

Great Dane vs. Chihuahua



<http://chweetpics.com/wp-content/uploads/2009/07/Great-Dane-and-Chihuahua-small.jpg>

Felidae *Panthera*

animals.nationalgeographic.com

animals.nationalgeographic.com



Lion



Tiger

Liger



Liger.com

news.nationalgeographic.com



Tigon

Domestic Cat



www.petpeoplesplace.com/resources/gallery/images/uploads/Abyssinian_802904131.jpg

www.zooinstitutes.com/animals/1385.jpg



Caracal

Caracat



Equidae *Equus zebra*



<http://thequickanddirtydirty.com/wp-content/uploads/2010/02/zebra.jpg>

Equidae *Equus ferus*



www.filebrothers.com/screenshot/horse-running-beach.jpg

Equidae *Equus zebra* + Equidae *Equus ferus* =

Zebroid



www.oddee.com/item_96640.aspx

What We Don't See

What We Don't See: A Rhinebra



www.worth1000.com/hosted/tutorials/151216_copy_57200524520PM_1c_finished.jpg

Bovidae *Bison bison*



www.livingwilderness.com/wildlife/bison-standing.html

**Bovidae *Bos primigenius*
(aka, Domesticated Cattle)
(>800 breeds)**



http://kenfuchs42.net/lonestar2008_01.html

Bovidae *Bison bison* + Bovidae *Bos primigenius* =

Beefalo



<http://americanmonsters.com/site/2009/12/beefalo-usa>



<http://www.texasheroes.net/Cattalo.jpg>

Camelidae *Camelus bactrianus*



<http://cdmi.cesr.fr/pub/Sandbox/ANewCamel/camel.jpg>

Camelidae *Lama glama*



http://commons.wikimedia.org/wiki/File:Domestic_Lama.jpg

**Camelidae *Camelus bactrianus* +
Camelidae *Lama glama* =
Cama**



www.hemmy.net/2006/06/19/top-10-hybrid-animals/

Gen. 1:21, 24, 25

*“So God created great sea creatures and every living thing that moves, with which the waters abounded, according to their **kind**, and every winged bird according to its **kind**. And God saw that it was good.”*

*“Then God said, “Let the earth bring forth the living creature according to its **kind**: cattle and creeping thing and beast of the earth, each according to its **kind**; and it was so. And God made the beast of the earth according to its **kind**, cattle according to its **kind**, and everything that creeps on the earth according to its **kind**. And God saw that it was good.”*

Bird



≠

Snake



≠

Turtle



≠

Bat



≠

Rat



≠

Cat



≠

Dog



≠

Pig



≠

Monkey



≠

Man



Ceratopsia

A few examples



Triceratops



Pentasaurus



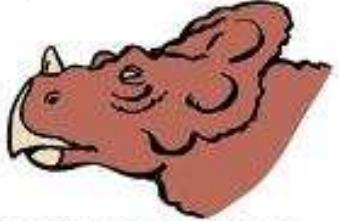
Torosaurus



Leptoceratops



Anchiceratops



Montanoceratops



Pachyrhinosaurus



Chasmosaurus



Eoceratops



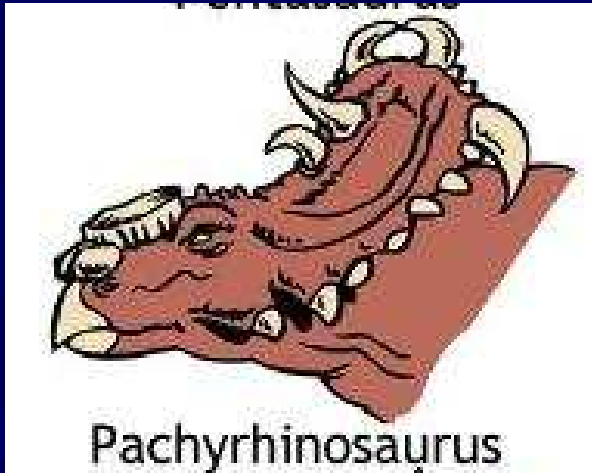
Styracosaurus



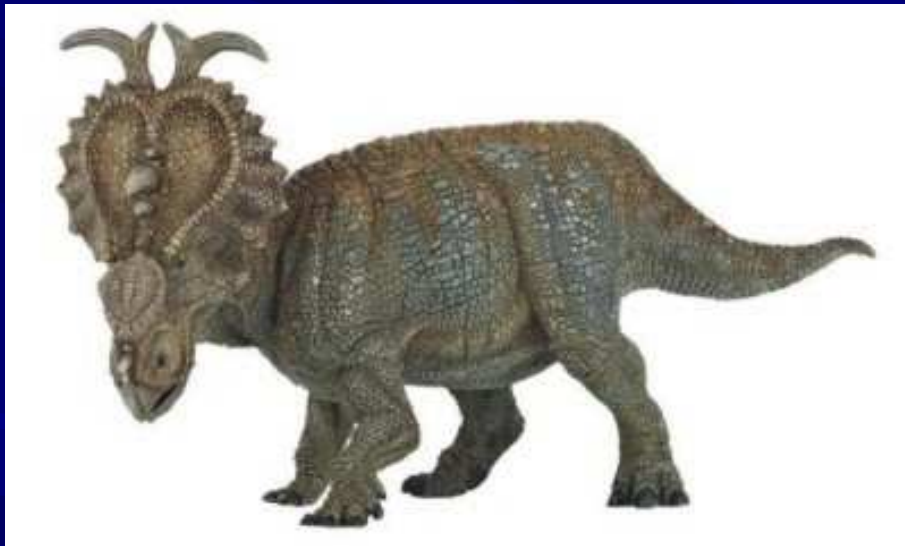
Centrosaurus

© 2006 Answers in Genesis

Infraorder of Related Dinosaurs



Pachyrhinosaurus



What Do Similarities in Human and Chimpanzee DNA Indicate?

- Humanists have argued chimpanzees may be our closest living “relative” because 98.5-99.4% of our DNA is homologous.
- The Journal *Nature*, in 2005, had a special issue dedicated to the chimp genome and chimp/human relatedness. Some called it “the most dramatic confirmation yet.” One headline stated, “Charles Darwin was Right and Chimp Gene Map Proves It.”
- What did they find? There was 50% less similarity between chimp and human DNA than previously thought (i.e., 96%)
- This percentage makes the two kinds seem closely “related”, but actually amounts to 35,000,000 differences in DNA base pairs.
- Plus, there are 40-45 million genes in humans missing from chimp DNA and vice versa, or up to 125,000,000 differences in human and chimp DNA.

What Do Similarities in Human and Chimpanzee DNA Indicate?

- **The Point?** If Humans evolved from chimp-like creatures, it would require at least 40 million beneficial, persistent (accumulating) mutations. . . . But we can't find one.
- Further, this evolutionary process supposedly occurred in only 300,000 generations (i.e., 6 million years)
- **HOWEVER**, a bacterium with a 20 min. generation time, goes through 368,320 generations in only 14 years and, yet we don't see **ONE** positive, persistent (accumulating) mutation, much less 40 million mutations.
- Finally, although chimps and humans are supposed to be more closely related, sharing a common ancestor that came after the gorillas, guess what was found when comparing their three genomes? 18-29% of human genetic markers are more similar than to gorillas than to chimps (which humans are supposed to be more closely related to – this reflects an intelligent designer making mix-and-match mosaics in creation (cf. duck billed platypus, red panda, human and octopus eyes, etc.).



**Common Ancestor
Or
COMMON DESIGNER?**

Conclusion

- **Animals can vary/change (microevolution) within their kind, but not outside their kind (macroevolution).**